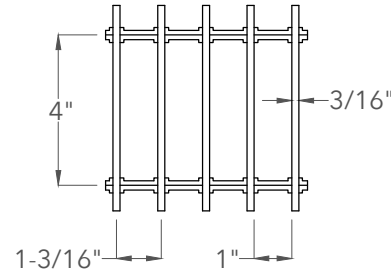
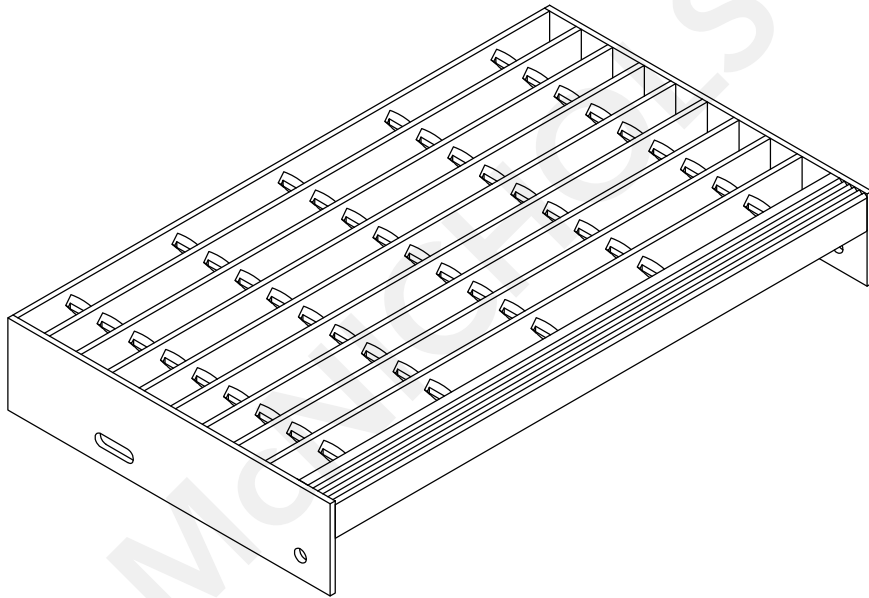
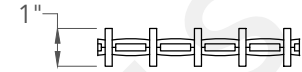


**Bar Grating**

**Top View**

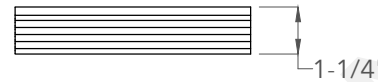


**End View**



**Nosing**

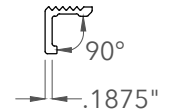
**Top View**



**Front View**

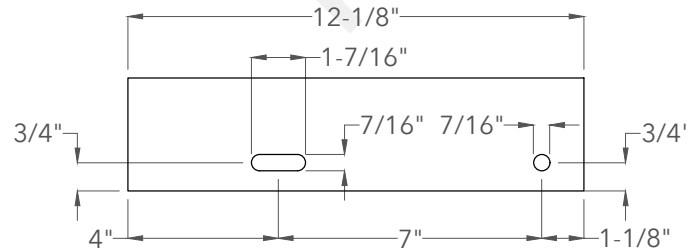


**End View**

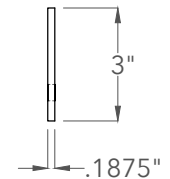


**Carrier Plate**

**Side View**



**End View**



**McNICHOLS®**

800.237.3820

[mcnichols.com](http://mcnichols.com)

Drawing is for visual and conceptual purposes, is not to scale, and is based on nominal manufacturing data subject to standard production tolerances. McNICHOLS CO. does not provide engineering services of any kind. Technical information provided is for evaluation by technically skilled persons only, with any use thereof to be at their independent discretion and risk. McNICHOLS CO. shall have no responsibility or liability for results obtained or damages resulting from improper evaluation or use. McNICHOLS CO. makes no representation or warranty of any kind, express or implied, at law or in equity, regarding drawing including with respect to merchantability, fitness for any particular use or purpose, or design. All other representations or warranties are hereby disclaimed. This document and other related documents are subject to McNICHOLS CO. Terms and Conditions.

**McNICHOLS® STAIR TREADS**

MAIN PRODUCT LINE	Bar Grating
SERIES TYPE & NAME	Bar - GAL-100 (Swage-Locked) 19-S-4
PRODUCT SPACING	Aluminum
PRIMARY MATERIAL	1" Height x 3/16" Thick Rectangular Bar
BEARING BAR SIZE & SHAPE	1-3/16" on Center
BEARING BAR SPACING	4" on Center
CROSS BAR SPACING	Smooth
PRODUCT SURFACE	Corrugated 90° Angle Nosing (1-1/4" Leg x 1-1/4" Leg)
NOSING	CP-BG-1230 Bar Grating Stair Tread Carrier Plates - Pair
CARRIER PLATE	(3" Height x 12-1/8" Width)

**DRAWING**

NOT TO SCALE

**Item Number** 670131T328

**Revision Date** 03.15.2022

**Page Number** 1 of 1

© 2022 McNICHOLS CO.  
All Rights Reserved.