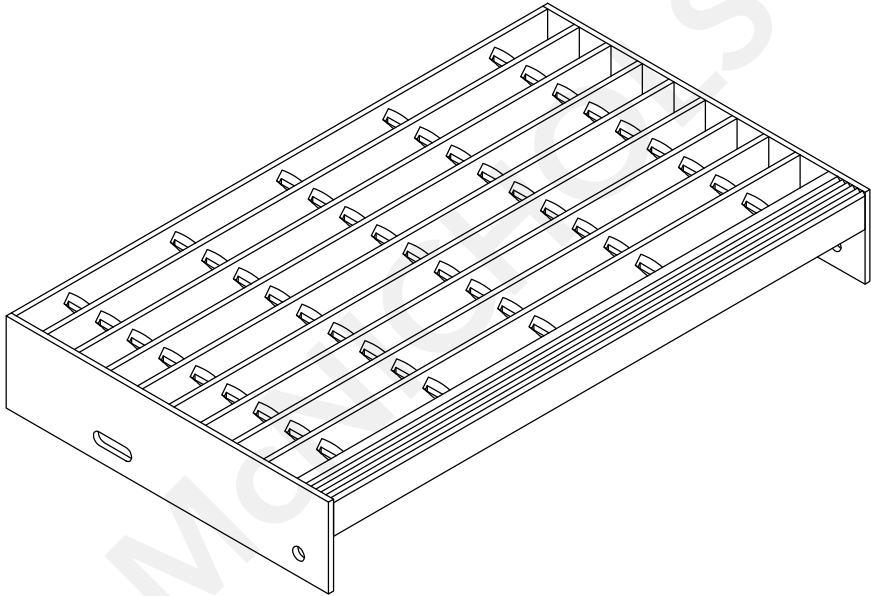
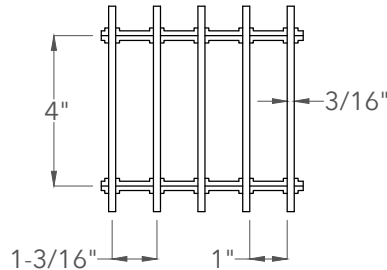


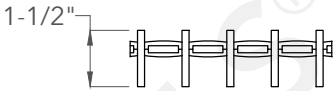
Bar Grating



Top View



End View

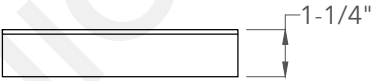


Nosing

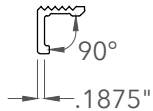
Top View



Front View

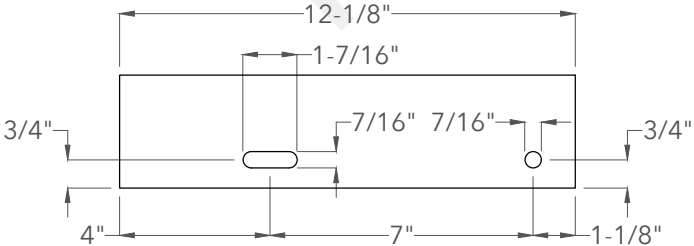


End View

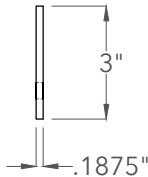


Carrier Plate

Side View



End View



McNICHOLS®

800.237.3820

mcnichols.com

Drawing is for visual and conceptual purposes, is not to scale, and is based on nominal manufacturing data subject to standard production tolerances. McNICHOLS CO. does not provide engineering services of any kind. Technical information provided is for evaluation by technically skilled persons only, with any use thereof to be at their independent discretion and risk. McNICHOLS CO. shall have no responsibility or liability for results obtained or damages resulting from improper evaluation or use. McNICHOLS CO. makes no representation or warranty of any kind, express or implied, at law or in equity, regarding drawing including with respect to merchantability, fitness for any particular use or purpose, or design. All other representations or warranties are hereby disclaimed. This document and other related documents are subject to McNICHOLS CO. Terms and Conditions.

McNICHOLS® STAIR TREADS

MAIN PRODUCT LINE	Bar Grating
SERIES TYPE & NAME	Bar - GAL-150 (Swage-Locked) 19-S-4
PRODUCT SPACING	Aluminum
PRIMARY MATERIAL	1-1/2" Height x 3/16" Thick Rectangular Bar
BEARING BAR SIZE & SHAPE	1-3/16" on Center
BEARING BAR SPACING	4" on Center
CROSS BAR SPACING	Smooth
PRODUCT SURFACE	Corrugated 90° Angle Nosing (1-1/4" Leg x 1-1/4" Leg)
NOSING	CP-BG-1230 Bar Grating Stair Tread Carrier Plates - Pair
CARRIER PLATE	(3" Height x 12-1/8" Width)

DRAWING

NOT TO SCALE

Item Number 670231T336

Revision Date 03.15.2022

Page Number 1 of 1

© 2022 McNICHOLS CO.
All Rights Reserved.