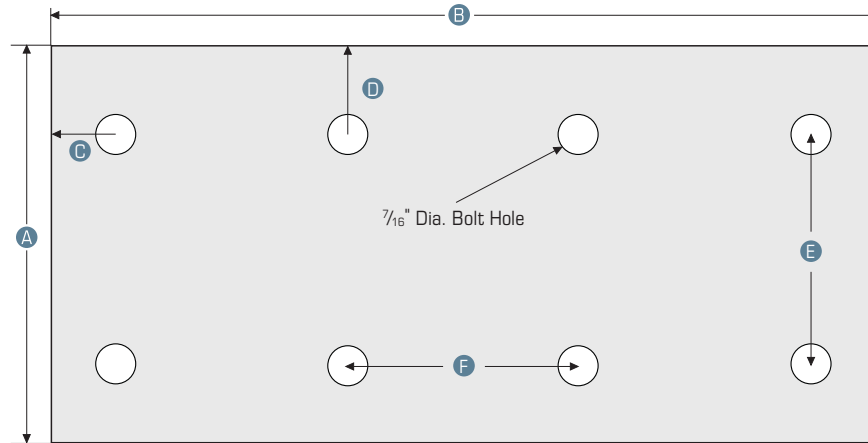


## SPLICE PLATE KIT DIAGRAM



|     |  |        |
|-----|--|--------|
| (A) | Height of Splice Plate   | 4"     |
| (B) | Width of Splice Plate  | 7"     |
| (C) | Center of 7/16" Diameter Bolt Holes Closest to the Left and Right Edges of the Splice Plate Along the Height Dimension | 7/16"  |
| (D) | Center of 7/16" Diameter Bolt Holes to Top and Bottom Edges of Splice Plate Along the Width Dimension                  | 3/4"   |
| (E) | Center to Center of 7/16" Diameter Bolt Holes Along the Height Dimension   | 2-1/2" |
| (F) | Center to Center of 7/16" Diameter Bolt Holes Along the Width Dimension  | 2"     |

- Walkway Splice Plates are compatible with Carbon Steel and Galvanized Steel **McNICHOLS** GRIP STRUT® Walkway products. Splice Plates are sold in pairs and are designed to be fastened to Walkway channel ends, connecting two Walkway lengths together. Each 10 Gauge (.1382" Thick) Splice Plate is pre-punched with eight 7/16" diameter holes designed to accept No. 14 Hex Bolts. Splice Plate Kits are supplied with two pre-punched 4" x 7" Plates, 16 - No. 14 Hex Bolts (7/16" Diameter x 1-1/4" Length), 16 - Round Washers (7/16" Diameter), and 16 - No. 14 Hex Nuts (7/16" Diameter).
- McNICHOLS** GRIP STRUT® Walkway products are typically supplied without pre-punched holes in Walkway channels. It is a common practice to manually drill bolt holes in the field prior to attaching Splice Plates to Walkway channel ends. GRIP STRUT® Walkway lengths can be supplied with pre-punched bolt holes as a custom order.
- Technical information provided is for evaluation by technically skilled persons only, with any use thereof to be at their independent discretion and risk. **McNICHOLS** shall have no responsibility or liability for results obtained or damages resulting from improper evaluation or use of Plank Grating Walkway or Splice Plates.